

Live like a star



Tagaytay

Your own
five-star getaway



The good guys!



in prime locations
Five-star homes, now AFFORDABLE.

Every single day, SM touches the lives of millions of people through its stores, its malls and its banks. Now too, Filipinos can live in style, comfort and convenience in SM Residences, under the banner of SM Development Corporation (SMDC).

SMDC has honed its business model anchored on giving its target market a view of life they could only aspire for before: affordable five-star living via SM Residences. This was enhanced by a location-driven strategy that enlarged its franchise to include more prime locations made accessible to a broader market base.

True to its tagline, "five-star homes in prime locations now affordable," SM Residences offers a roster of residential condominium developments for the middle-income market.

One of which is Wind Residences.



The good guys!

SITE DEVELOPMENT PLAN



LAND AREA: 15.45 hectares

LOCATION: Tagaytay City

NUMBER OF BUILDINGS: 10 Buildings

NUMBER OF FLOORS PER BUILDING: 20 Floors

All information stated is intended to give a general overview of the project. The developer reserves the right to modify as it sees fit without prior notice.

LOCATION



Along Aguineldo Highway, Barangay Maharlika West, Tagaytay City.

AMENITY AREA



AMENITIES

Experience a taste of 5-Star living with these luxury amenities.



Basketball Court



Badminton Courts



Tennis Court



Swimming Pools



Garden / Lawn



Playground Area



Jogging Paths



Clubhouse



Function Rooms



Recreational Area



Property Management services are also available for a variety of needs, like unit leasing, general maintenance and housekeeping. Enjoy these privileges for reasonable rates.

All information stated is intended to give a general overview of the project. The developer reserves the right to modify as it sees fit without prior notice.

BUILDING FLOOR PLANS

FACING ALFONSO / SILANG CAVITE



-  Resort Residential 1
-  Commercial Units

FACING TAAL LAKE

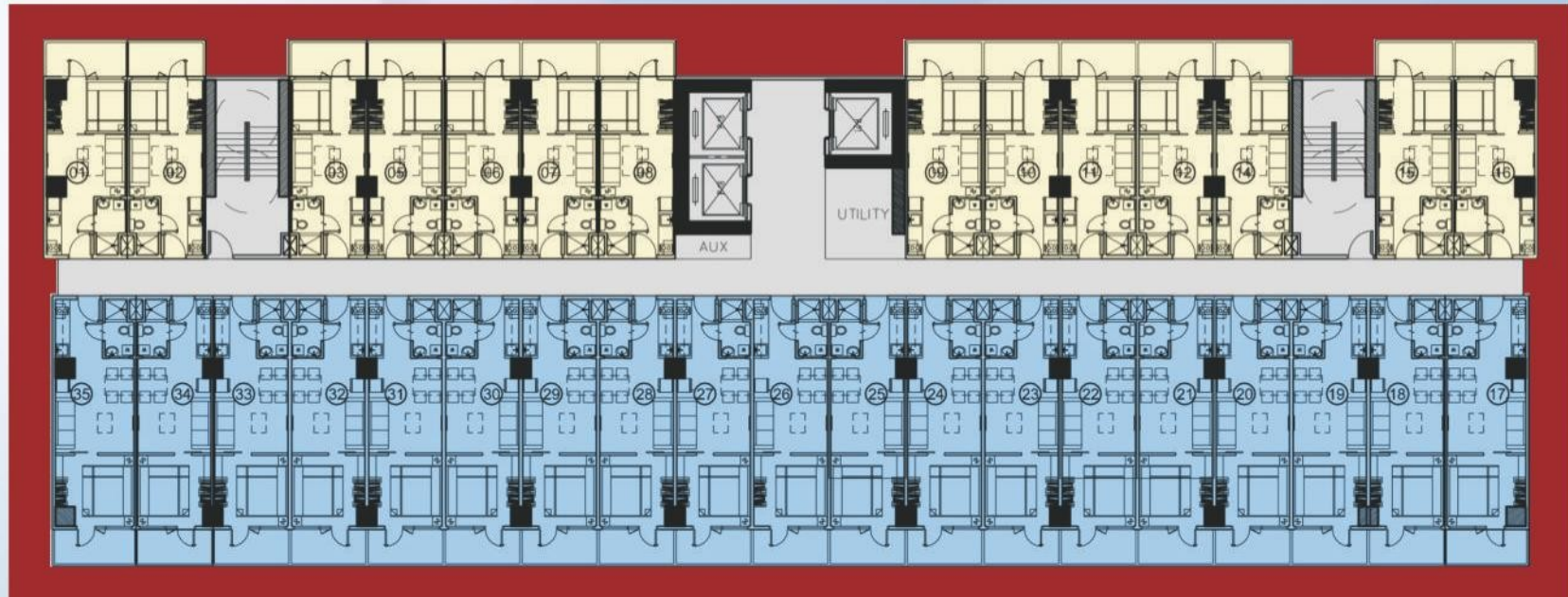
UPPER GROUND Floor Plan



Tower 1

BUILDING FLOOR PLANS

FACING ALFONSO / SILANG CAVITE



-  Resort Residential 1
-  Resort Residential 2

FACING TAAL LAKE

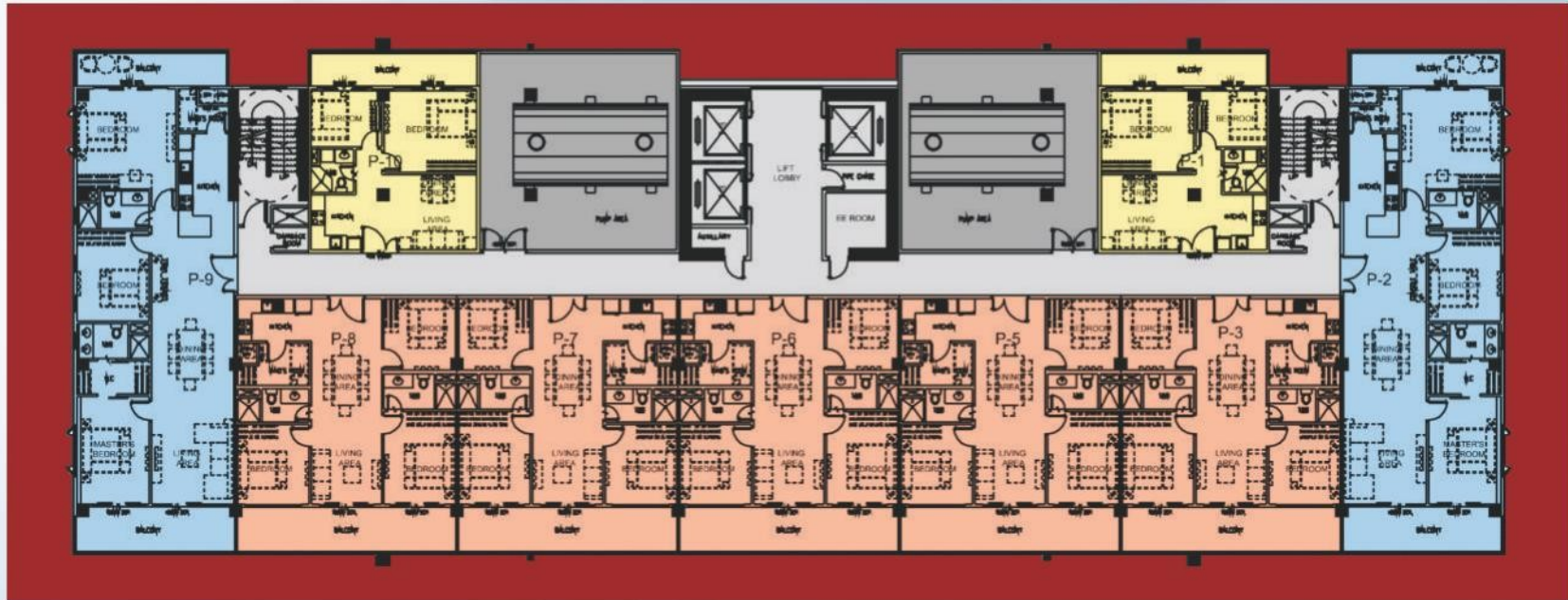
Typical Floor Plan: 2nd to 23rd




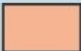

Tower 1

BUILDING FLOOR PLANS

FACING ALFONSO / SILANG CAVITE



FACING TAAL LAKE

-  2-Bedroom Penthouse Unit w/ Balcony
-  3-Bedroom Penthouse Unit w/ Balcony
-  3-Bedroom Deluxe Penthouse Unit w/ Balcony

PENTHOUSE Floor Plan



Tower 1

UNIT FLOOR PLANS



Resort Residential Unit 1
28.19 sqm.



Resort Residential Unit 2
34.81 sqm.

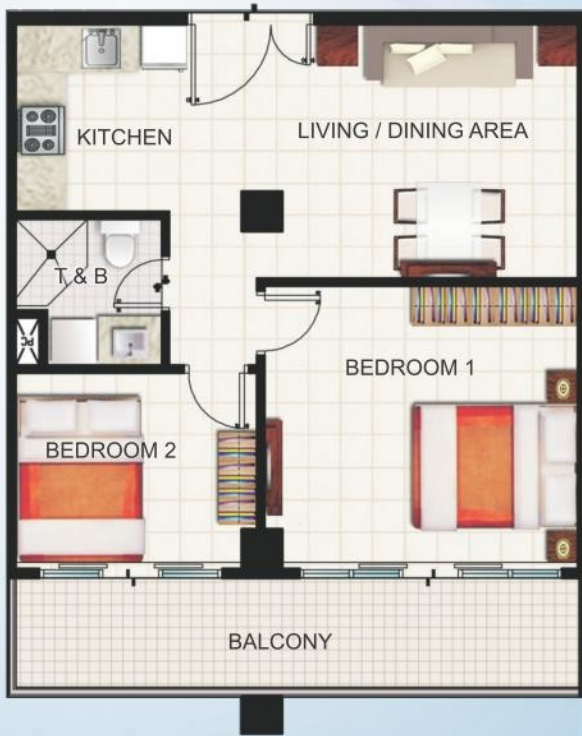


Tower 1

All information stated is intended to give a general overview of the project. The developer reserves the right to modify as it sees fit without prior notice.

UNIT FLOOR PLANS

PENTHOUSE UNITS



**2-Bedroom Penthouse
Unit w/ Balcony
63.36 sqm.**



**3-Bedroom Penthouse
Unit w/ Balcony
104.42 sqm.**

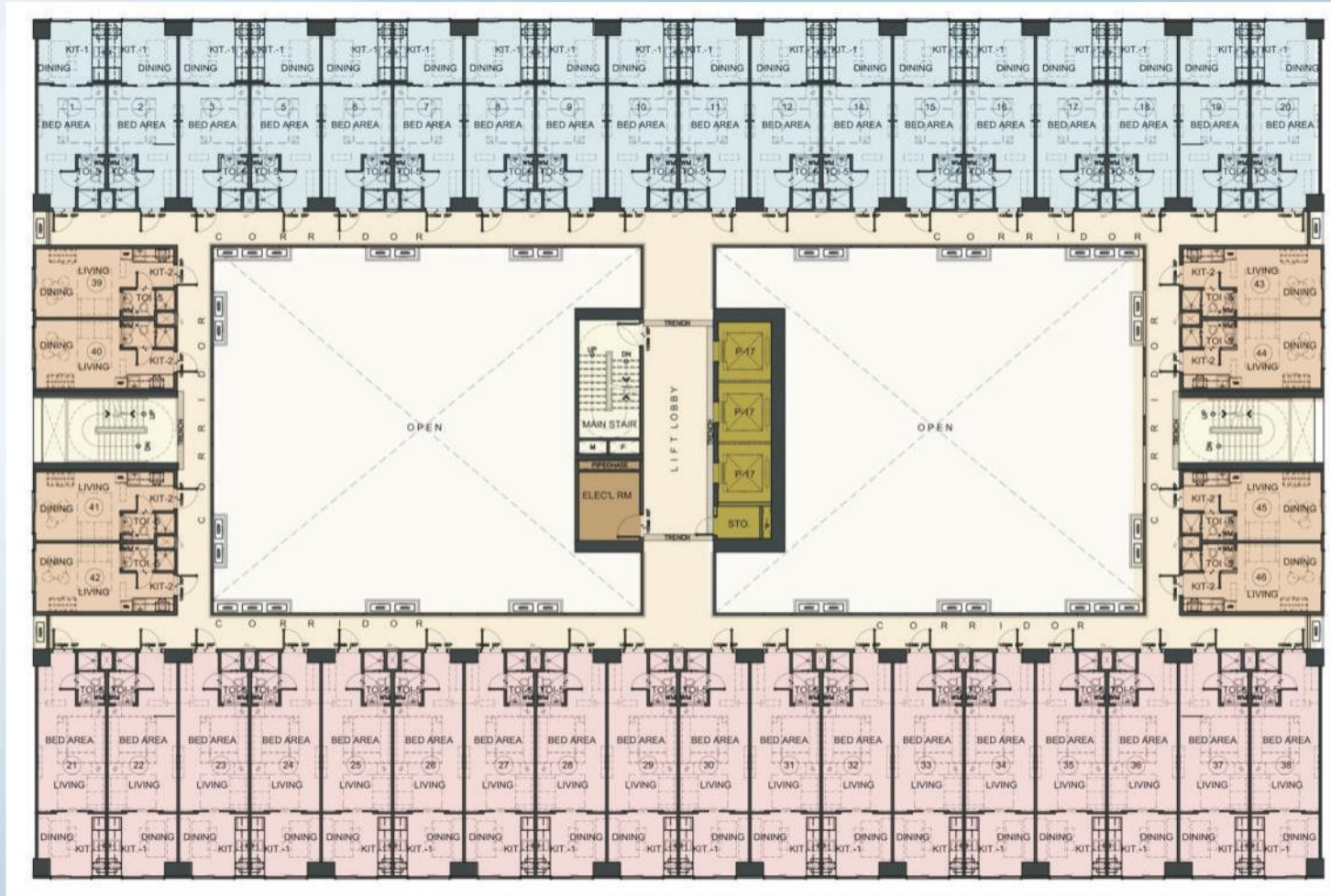


**3-Bedroom Deluxe Penthouse
Unit w/ Balcony
148 sqm.**

Tower 1

BUILDING FLOOR PLANS

FACING ALFONSO / SILANG CAVITE



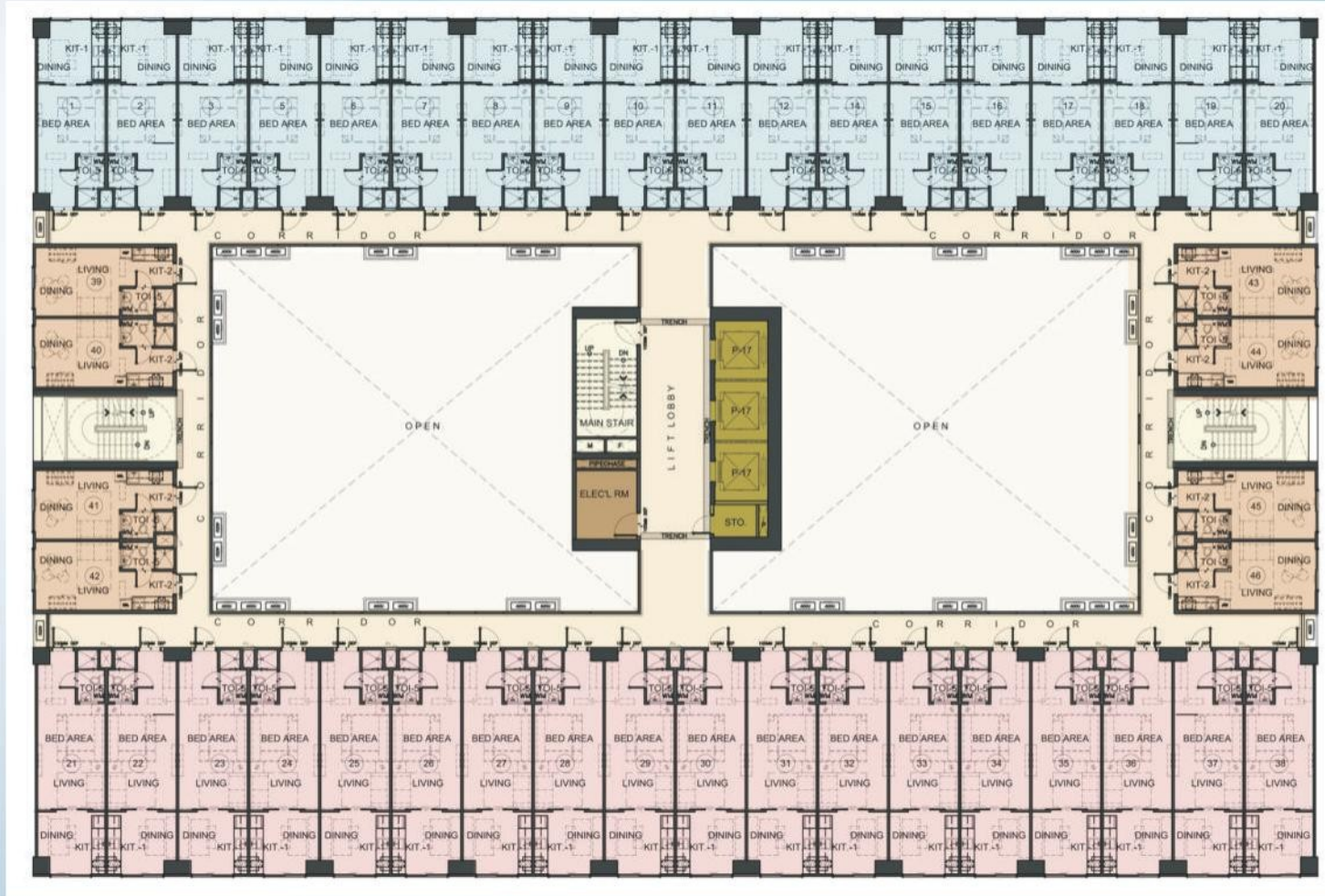
FACING TAAL LAKE

Typical Floor Plan: 2nd to 23rd



BUILDING FLOOR PLANS

FACING ALFONSO / SILANG CAVITE



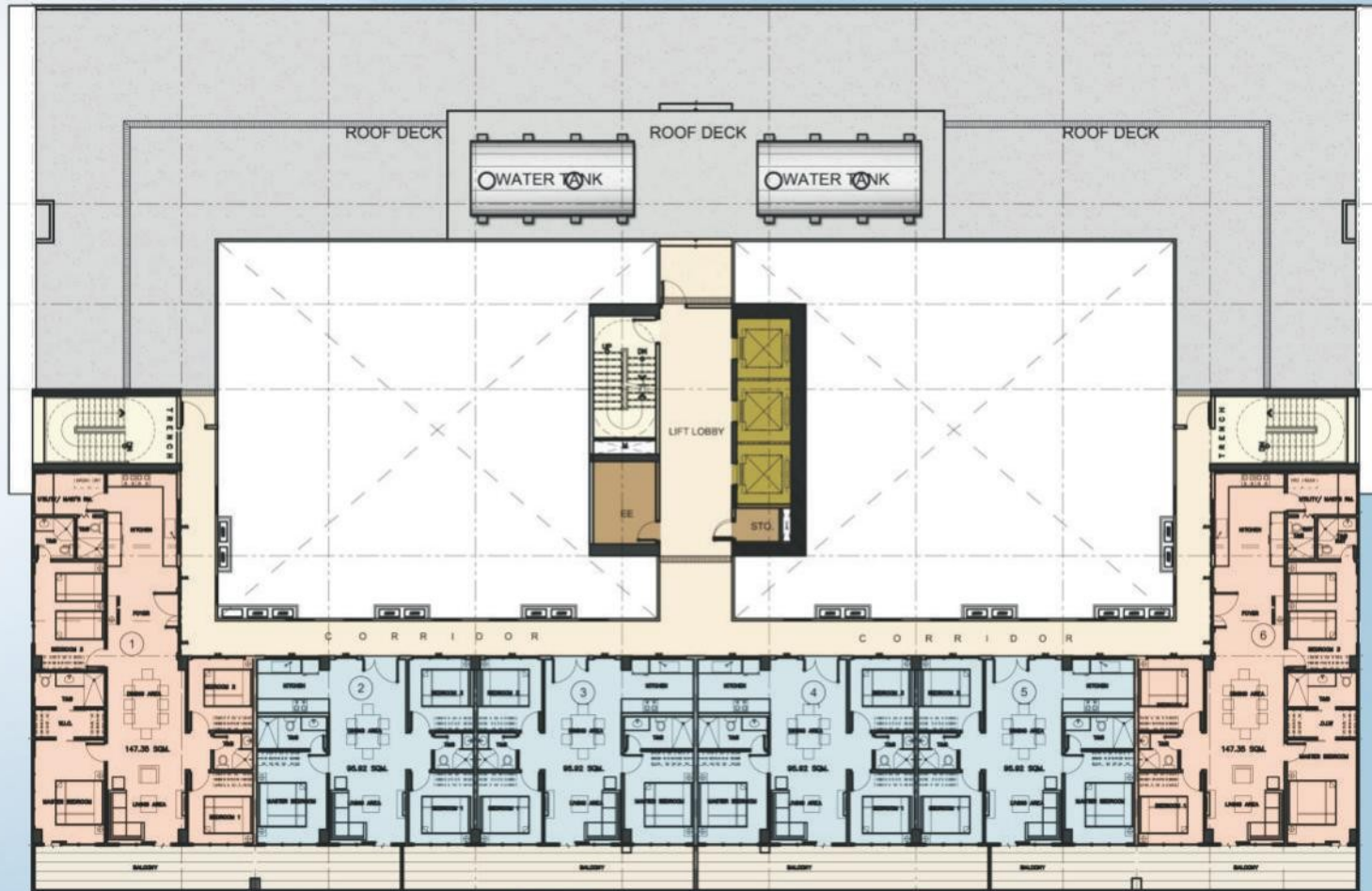
FACING TAAL LAKE

Typical Floor Plan: 2nd to 23rd



BUILDING FLOOR PLANS

FACING ALFONSO / SILANG CAVITE



FACING TAAL LAKE

Penthouse Floor Plan



Tower 2

UNIT FLOOR PLANS



Resort Residential Unit 1
31.97 sqm.



Resort Residential Unit 2
26.62 sqm.



Deluxe Unit End
20.64 sqm.



UNIT FLOOR PLANS

PENTHOUSE UNITS



3-Bedroom Unit with Balcony
95.91 sqm.



4-Bedroom Unit with Balcony
147.42 sqm.

BUILDING FLOOR PLANS

FACING ALFONSO / SILANG CAVITE



FACING TAAL LAKE

-  Resort Residential 1
-  Resort Residential 1 End Units
-  Resort Residential 1 Deluxe



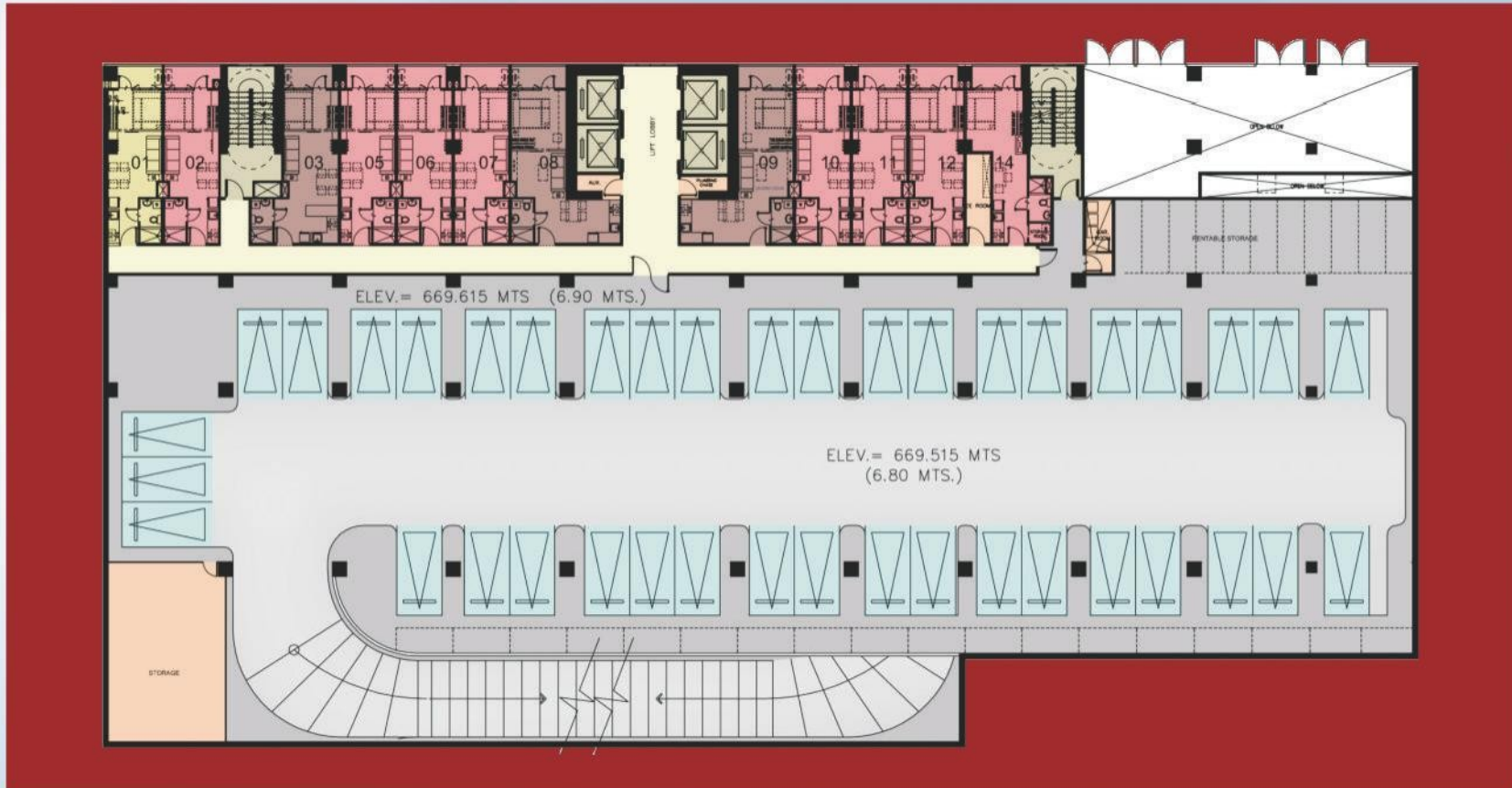
UPPER GROUND Floor Plan

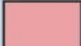


Tower 3

All information stated is intended to give a general overview of the project. The developer reserves the right to modify as it sees fit without prior notice.

BUILDING FLOOR PLANS

FACING ALFONSO / SILANG CAVITE



-  Resort Residential Unit 3
-  Resort Residential Deluxe Unit 3
-  Resort Residential End Unit 3

FACING TAAL LAKE



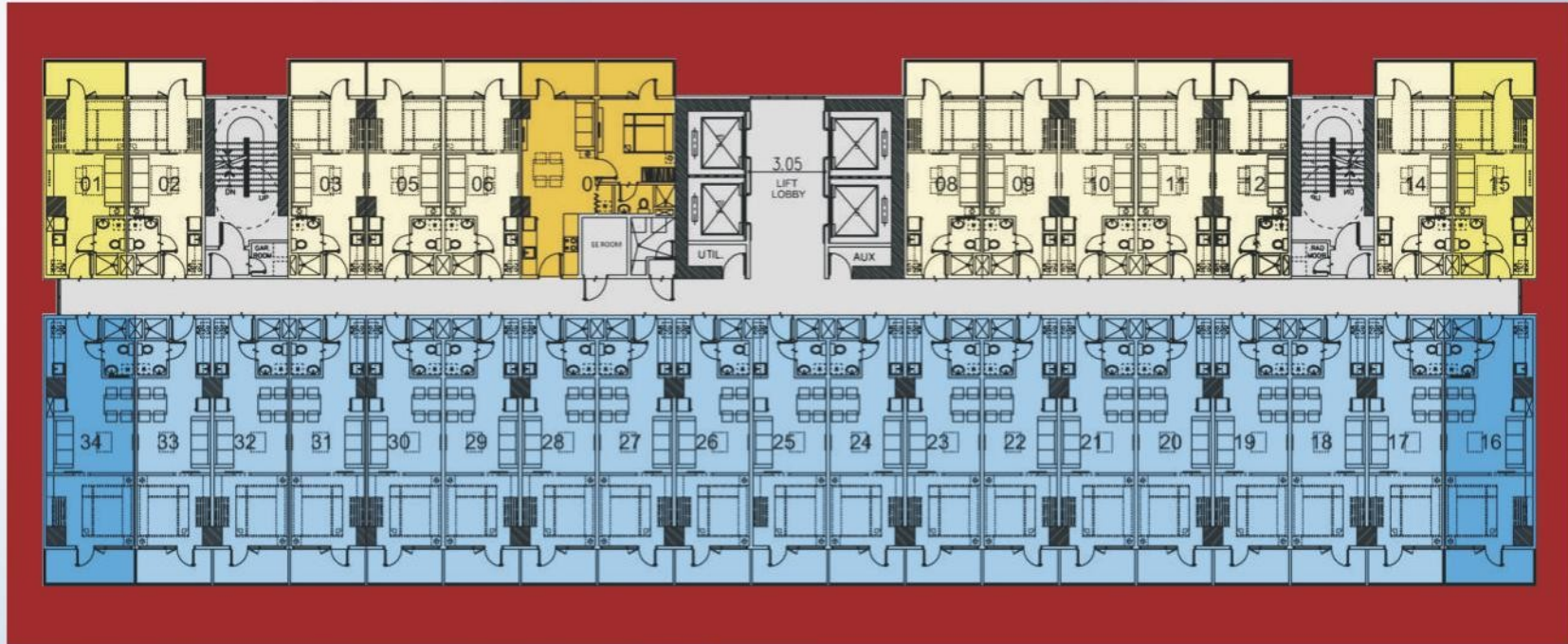
LOWER GROUND Floor Plan

Tower 3

All information stated is intended to give a general overview of the project. The developer reserves the right to modify as it sees fit without prior notice.

BUILDING FLOOR PLANS

FACING ALFONSO / SILANG CAVITE



- Resort Residential 1
- Resort Residential 1 End Units
- Resort Residential 1 Deluxe
- Resort Residential 2
- Resort Residential 2 End Units

FACING TAAL LAKE

Typical Floor Plan: 2nd to 23rd



Tower 3

UNIT FLOOR PLANS



Resort Residential 1
28.27 sqm.



Resort Residential 2
34.88 sqm.



Resort Residential 1-End Unit
30.74 sqm.

UNIT FLOOR PLANS



Resort Residential 2 End Unit
41.81 sqm.



Resort Residential 1 Deluxe Unit
48.18 sqm.

Typical 1-BR / Studio Units Finishes

ABOVE STANDARD CEILING HEIGHT:

2.80 meters in living areas, 2.40 meters in toilet and foyer areas

COMPLETE FINISH UPON TURN-OVER:

LIVING / DINING / BEDROOM

- **Floor** - Polished Homogenous Tiles
- **Wall** - Plain Cement Semi-Gloss Latex Painted Finish for Wall Surface
 - Semi-Gloss Latex Paint Finish for all Dry Wall Partitions
- **Ceiling** - Flat Latex Painted Finish

TOILET AND BATH (Common and Master)

- **Floor** - Ceramic Tiles
- **Wall** - Plain Cement Semi-Gloss Latex Painted Finish for Concrete Surface with Ceramic Tiles for Toilet and Bath
- **Ceiling** - Gypsum Board Moisture-Resistant Flat Latex Painted Finish

BALCONY

- **Ceiling** - Latex Painted Finish
- **Floor** - Ceramic Tiles

KITCHEN COUNTER TOP

- Kitchen Counter Top with Cabinet
- Stainless Steel Satin Finish Single Bowl without Drain Board (Kitchen Sink)
- Goose Neck (Kitchen Faucet)